

EXPOSURE UNITS

EDF LED

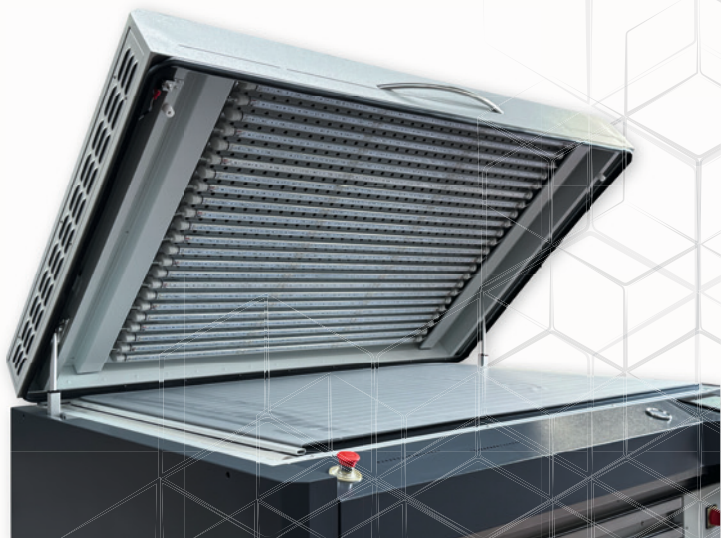


MAIN FEATURES

- Combined exposure, dryer and light finishing unit
- Intuitive user-friendly HMI touch screen controlling all the steps of the process
- Main exposure equipped with LED lamps and airflow system for lamps cooling
- Drying section consisting of 4 drying drawers with independent timers
- Light finishing section with UVA and UVC lamps with LEDs indicating the status of each lamp (flexo version)
- Dedicated exhaust system (flexo version)
- Remote connection possibility

Optional

- Main exposure with cooled bed



AGI
Attrezzature Grafiche Italia

WWW.AGIGRAPHICS.COM



TECHNICAL DATA

36/47

MODEL

920x1240 mm
36"x48"

Max Plate Dimension

186x162x109

Dimension WxDxA cm

650

Weight kg

400V 3PH+N+GND 50/60Hz
230V 3PH+GND 50/60 Hz

Power Supply

11,5

Power kW

23xLED 365 nm L.1300 mm

Exposure LED UVA Lamps

17x80W 10R L.1500 mm

Post-Exposure UVA Lamps

16x60/95W L.1500 mm

Exposure UVC Lamps